



MONTHLY MEMBERSHIP PROGRESS REPORT

District 202 J

Results as of: 1/31/2017

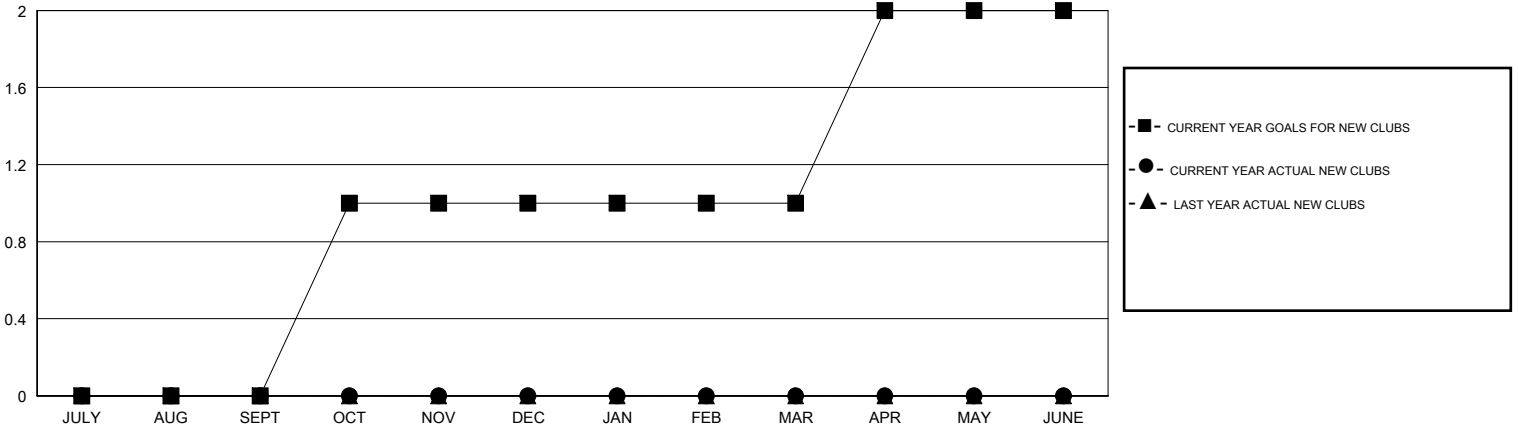
GMT: Huck Taingahue

LOCATION NEW ZEALAND

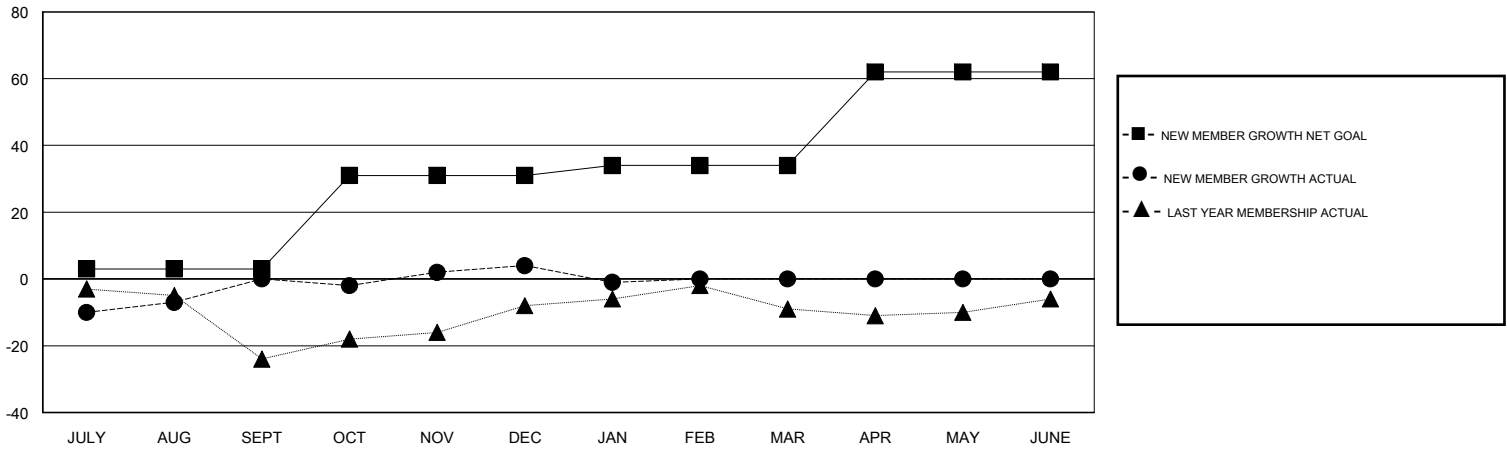
GMT CA

| Clubs | | | | Members | | | |
|-----------------------|---------------|-----------|---------------|-----------------------|--|--|--|
| RESULTS FOR 2016-2017 | | | | RESULTS FOR 2016-2017 | | | |
| QUARTER | NEW CLUB GOAL | NEW CLUBS | DROPPED CLUBS | QUARTER | NEW MEMBER GROWTH NET GOAL (not reinstated or transfers) | NEW MEMBER GROWTH ACTUAL (not reinstated or transfers) | DROPPED MEMBERS ACTUAL (including transfers) |
| JULY/AUG/SEPT | 0 | 0 | 0 | JULY/AUG/SEPT | 3 | 21 | 21 |
| OCT/NOV/DEC | 1 | 0 | 0 | OCT/NOV/DEC | 28 | 21 | 17 |
| JAN/FEB/MAR | 0 | 0 | 0 | JAN/FEB/MAR | 3 | 1 | 6 |
| APR/MAY/JUNE | 1 | 0 | 0 | APR/MAY/JUNE | 28 | 0 | 0 |

GOALS AND ACTUAL NEW CLUBS CUMULATIVE



GOALS AND ACTUAL MEMBERS CUMULATIVE



| | | |
|------------------|---|------------------------------------|
| DROPPED CLUBS: 0 | 19 CLUBS OF 39 ADDED 1 OR MORE NEW MEMBERS | <u>GENDER DISTRIBUTION</u> |
| DROPPED MEMBERS | CLICK HERE FOR CUMULATIVE MEMBERSHIP DATA | MALE 986 (76.73%) |
| DECEASED 9 | | FEMALE 299 (23.27%) |
| CLUB CANCELLED 0 | | TOTAL FAMILY UNIT MEMBERS 56 |
| OTHER 35 | | FAMILY MEMBERS PAYING HALF DUES 28 |
| TOTAL 44 | | |